

## RENTAL OF OUR GROUNDS

Address:

Hauptstraße Silberwald 411  
2231 Strasshof  
Österreich



Contact:

[vermietung@pfadfinder-strasshof.at](mailto:vermietung@pfadfinder-strasshof.at)

Directions:

By car coming from Vienna via B8 towards Gänserndorf.

By train from Vienna with the S1 towards Gänserndorf, stop „Silberwald“ followed by a 10-15min walk.

Grounds:

About 12.000 m<sup>2</sup>  
with a big forest  
and several grass  
fields.

Also includes a big  
campfire place with  
wood to burn or  
build with.

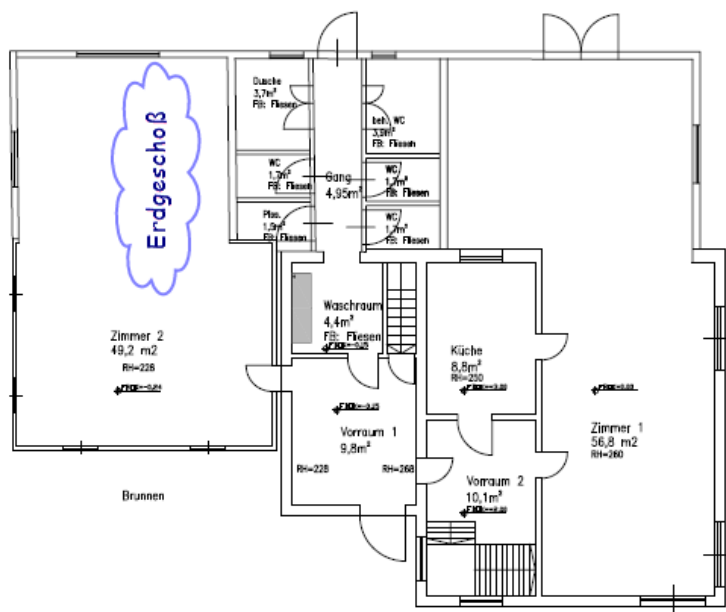


**House:**

Entrance about. 10 m<sup>2</sup>

Kitchen (7 m<sup>2</sup>) mit electrical hob + oven, microwave, 2 refridgerators, sink, coffee machine, dishwasher, dishes & cutlery for at least 20 people (more available upon request)

2 big rooms on the ground floor, about 50 m<sup>2</sup> each.



Third room on the first floor with about 20 m<sup>2</sup> **(Only included in the Rental upon request!)**

4 toilets, 1 shower, 1 accessible toilet

The Grounds and the house is **ONLY** rented to scout groups!

Active Members of the scout group Strasshof, the Gilde or the Parents council may also rent the grounds and house for private occasions.

Dates are only fixed after written approval by the Group council or the Rental team.

**Reservations:**

A reservation is only valid if the reservation form was filled out and signed in advance and the reservation was approved in writing.

**Cost:**

Rent per day and person: 3,50€

Electricity: The electric meter is read before and after your stay and you are then billed 0,25€ per used kwh

**Garbage:** 5 Euro per 60L bag (GVU).



Each started day is billed, no matter what time you arrive on site.

*No down payments necessary.*

*The bill is sent via Email and to be payed via bank transfer. No cash payments*

**Free Vacancies** can be found on our website [www.pfadfinder-strasshof.at/Kalender](http://www.pfadfinder-strasshof.at/Kalender) .

We do not rent out our site during the Christmas, Easter and Halloween Holidays.

### **Bank Details:**

Raiffeisenbank Marchfeld-Mitte

IBAN: AT37 3209 2000 0040 2768

BIC: RLNWATWWGAE

NÖ PfadfinderInnen Gruppe Strasshof

You will find a detailed description of our technical equipments, phone numbers, grocery stores, doctors inside the house.

See you,

the rental team.